



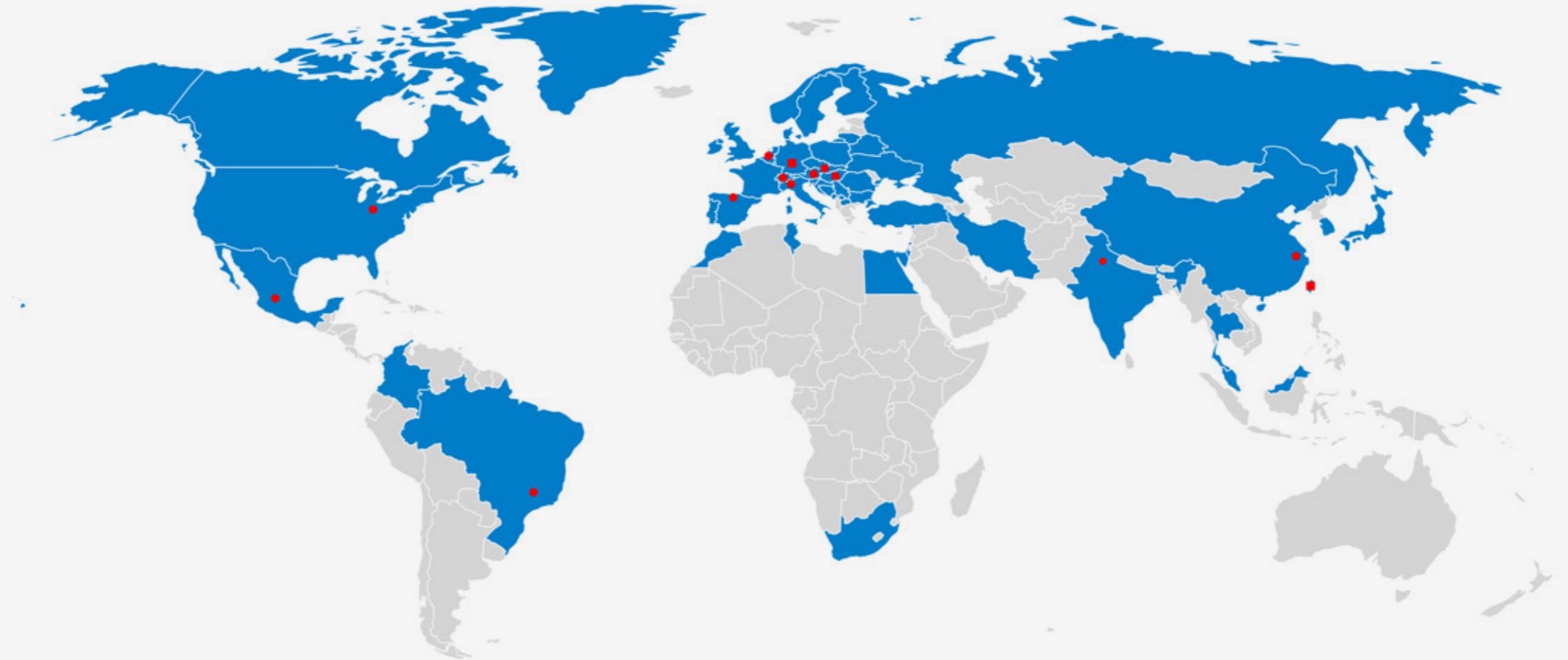
**ALLRUNA<sup>®</sup>**

Thermoplastic Elastomers



# ALLOD INTERNATIONAL

With headquarters in Germany, ALLOD is an international compounding corporation for TPE and other highly specialized compounds. In order to better serve our Asian customers, we opened a production plant in Taichung (Taiwan) and an office in Ningbo (Mainland) in 2016. Besides our warehouse in Romulus (USA) we also opened one in Querétaro (Mexico) in 2021.



Our brand name ALLRUNA® is used in different applications areas worldwide.

- Production sites
- Locations
- Countries of sale



## Development and production of specialized TPE

Thermoplastic elastomers (TPE) are used in various fields in the plastic industry. High-performance products often require specially tailored material development and close cooperation with customers. Our staff has decades of experience and a global presence within international markets, making ALLOD an exceptionally flexible partner in material development and production.



# APPLICATION OF ALLRUNA®

We offer established standard compounds for general applications alongside our specialized developments. Moreover, our thermoplastic elastomers possess a wide processing range and cover multiple application areas.

## Automotive Exterior

- GRC corner molding
- End cap
- Water deflector
- Window encapsulation
- Pillar cover
- Cowl
- ...



## Automotive Interior

- Pad
- Thumb wheel
- Gasket
- Grommet
- Grip
- Cup holder
- Soft touch
- Anti-pinch
- ...



## Consumer & Industry

- Grip
- Gasket
- Soft touch
- Protection equipment
- Membrane
- Pipe
- ...



## Regulatory Standards

- VW 50123, TL 52622, DBL 5562, GS 93042, GMW 16233
- Ford WSS M2D505-A2, WSS M2D517-A2, WSS M2D510-A7
- Food regulation ( FDA, (EU)No 10/2011, GB 4806.7)
- Medical regulation ISO 10993
- RoHS & Reach
- UL 94 HB, UL 94 V0





# HIGH-QUALITY TPE WITH ADHESION TO PP FOR VARIOUS APPLICATIONS

Series	Hardness	Color	Processing
W - S 313	20A - 50D	Black	Injection molding, Extrusion
W - S 213	20A - 50D	Natural	
W - S 113	20A - 50D	Translucent	



## Characteristics

- Excellent UV resistance
- Outstanding PP & TPV adhesion
- Easy flow
- Chemical resistance
- Superior surface finish
- Minimal odor
- Colorable
- Recyclable

## Modification

- Improved flow
- Enhanced compression set
- Coloring, transparent
- Food regulation compliance
- Oil-free
- Extremely soft - low on Shore 00 Scale
- Antifungal
- Foamed

## Application

### Automotive Exterior PV 3929 / PV 3930 two cycles

- GRC corner molding
- Window encapsulation
- End cap
- Water deflector
- Gasket
- Cowl
- ...



### Automotive Interior PV 1303 5 cycles

- Pad
- Grommet
- Gasket
- Plug
- ...



### Consumer & Industry

- Grip
- Gasket
- Soft touch
- Pipe
- Protection layer
- ...







# LUBRICATED TPE WITH ADHESION TO PP AND LOW COEFFICIENT OF FRICTION

Series	Hardness	Color	Processing
W - S 379	30 - 90A	Black	Injection molding,
W - S 279	30 - 90A	Natural	Extrusion

## Characteristics

- Excellent UV resistance
- Outstanding PP & TPV adhesion
- Easy flow
- Superior surface finish
- Low COF
- Scratch-resistant
- Minimal odor
- Colorable
- Recyclable

## Modification

- Improved flow
- Enhanced compression set
- Coloring
- Food regulation compliance
- Antifungal
- Foamed



## Application

### Automotive Exterior

- GRC corner molding
- Window encapsulation
- End cap
- Gasket
- ...



### Automotive Interior

- Mat
- Gasket
- Plug
- ...



### Consumer & Industry

- Grip
- Gasket
- Soft touch
- Protection equipment
- ...







## TPE WITH ADHESION TO EPDM AND SUPERIOR UV RESISTANCE

Series	Hardness	Color	Processing
WT - S 315	50 - 80A	Black	Injection molding

### → Characteristics

- Superior UV resistance
- Excellent bonding to EPDM & TPV
- Good surface finish
- Minimal odor
- Recyclable

### → Application

- GRC corner molding
- End cap
- ...

### → Modification

- Improved flow
- Lubricated

## TPE WITH ADHESION TO ABS, PC, PMMA AND SUPERIOR UV RESISTANCE

Series	Hardness	Color	Processing
W - U 355	50 - 80A	Black	Injection molding

### → Characteristics

- Superior UV resistance
- Excellent bonding to ABS, PC , PC/ABS, PMMA, ASA, etc.
- Easy flow
- High-quality surface finish
- Recyclable

### → Application

- A, B, C, D pillar
- Water deflector
- Triangle window cover
- End cap
- ...

# TPE WITH EXCELLENT BONDING STRENGTH TO ABS, PC, PET, SAN



Series	Hardness	Color	Processing
W - E 315	40 - 70A	Black	Injection molding, Extrusion
W - E 215	40 - 70A	Natural	Injection molding, Extrusion

### Characteristics

- Good UV resistance
- Excellent adhesion to ABS, PC, PC/ABS, ASA, PBT, PET, POM, etc.
- Minimal odor
- Wide processing temperature window
- Colorable
- Recyclable

### Application

- Gasket
- Grip
- Soft touch
- Plug
- ...

### Modification

- Enhanced compression set
- Improved flow
- Transparent
- Food contact regulation compliance
- Antifungal

Series	Hardness	Color	Processing
W - U 313	30 - 70A	Black	Injection molding, Extrusion
W - U 213	30 - 70A	Natural	Injection molding, Extrusion

### Characteristics

- Good surface
- Excellent adhesion to ABS, PC, PC/ABS, ASA, PMMA, etc.
- Economical
- Colorable
- Recyclable

### Application

- Grip
- Soft touch
- ...

### Modification

- Improved flow
- Coloring





**Characteristics**

- Excellent adhesion to PA6, PA 66, up to 50% glass fiber
- Excellent adhesion to PA12, PA11
- Good flow
- Colorable
- Wide processing temperature window
- Recyclable

**Application**

- Power tool grips
- Gasket for white goods
- Soft touch
- ...

**Modification**

- Improved compression set
- Coloring
- Antifungal
- ...

# TPE WITH EXCELLENT BONDING STRENGTH TO PA

Series	Hardness	Color	Processing
W - A 381	30 - 70A	Black	Injection molding, Extrusion
W - A 281	30 - 70A	Natural	

# TPE WITH RECYCLED RAW MATERIAL SOURCE

Series	Hardness	Color	Recycled content	Processing
W - R 313	50A - 50D	Black	Up to 40%	Injection molding
W - R 213	50A - 50D	Natural	Up to 40%	



**Characteristics**

- Superior PP adhesion
- UV-resistant
- Great mechanical properties
- Recyclable

**Application**

- Automotive exterior / interior
- Grip
- Soft touch
- Plug
- ...

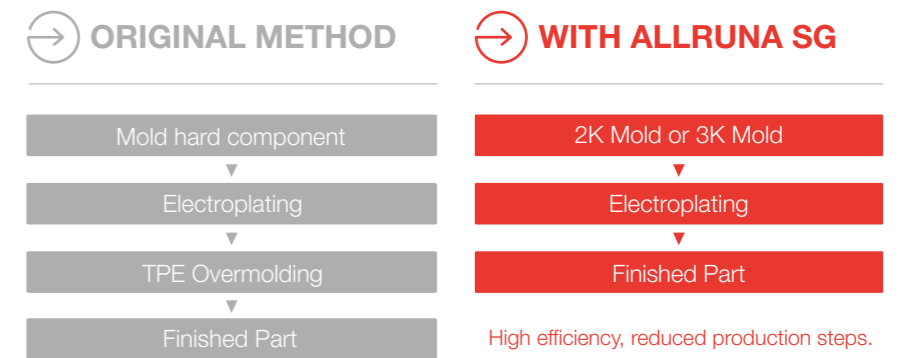




# SPECIALITY MATERIALS WITH EXCELLENT PROPERTIES

## SELECTIVE ELECTROPLATING TPE

This series is suitable for bonding to engineering thermoplastics. TPE maintains its original appearance during electroplating without affecting the electroplating process.



### → Characteristics

- Adhesion to PC, ABS, PC/ABS
- Colorable

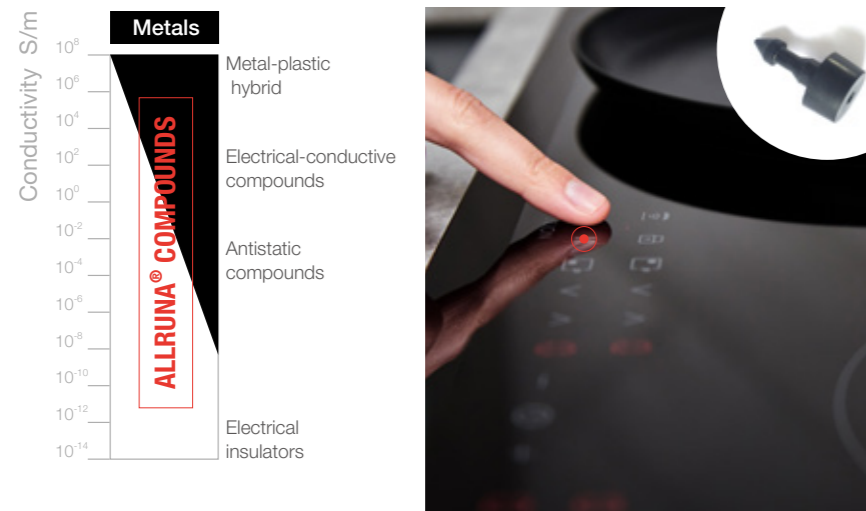
### → Application

- Grip
- Soft touch
- Thumb wheel
- ...



## ELECTRICAL CONDUCTIVE TPE

Electrical Conductive TPE have a specific resistance of down to < 1 Ohm-cm



### Processing

- Injection molding
- Extrusion

### Characteristics

- Low electrical resistance
- Good mechanical properties

### Application

- Anti-pinch for automotive use
- Electronic
- Switch
- ...

## HIGH-TEMPERATURE RESISTANCE MATERIALS FOR CAR BODY PLUGS

ALLRUNA car body plugs material is developed especially for this application.



### Processing

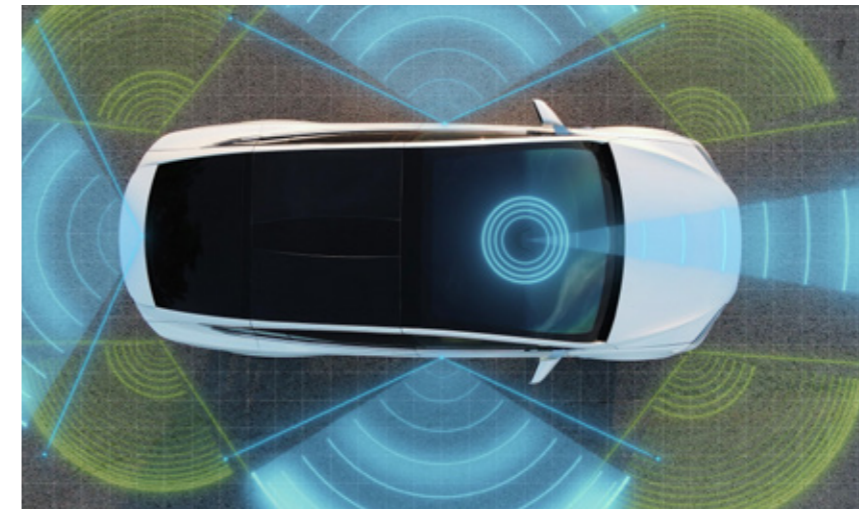
- Injection molding

### Characteristics

- Temperature resistance
- Metal adhesion possible
- Up to 200 °C

## PTC MATERIAL

ALLRUNA PTC materials use a unique compound with a Positive Temperature Coefficient effect. These materials have a low electrical resistance, providing a fast heating speed and temperature stability.



### Processing

- Injection molding
- Extrusion

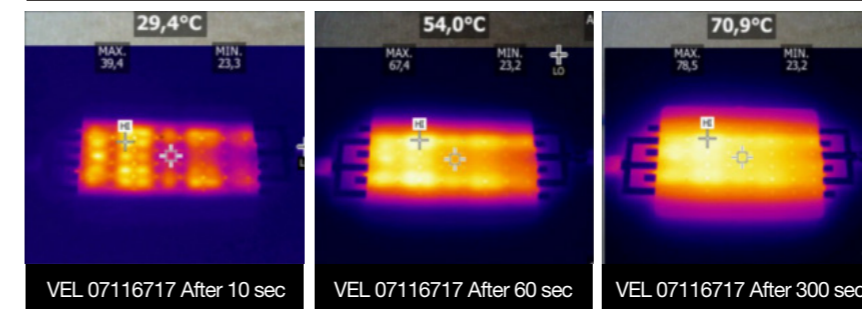
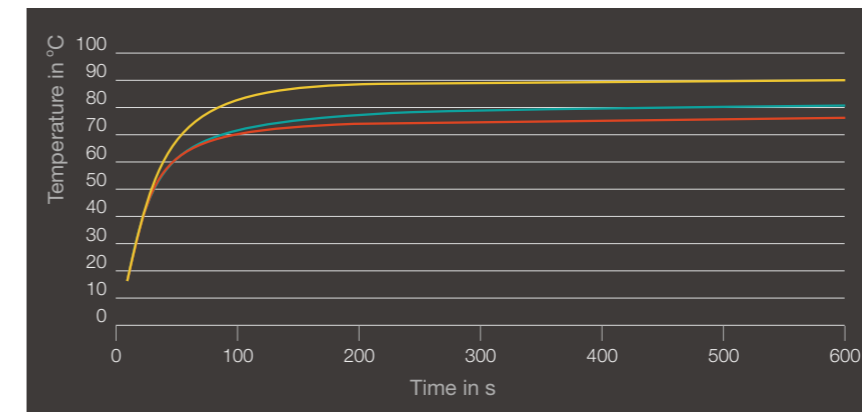
### Characteristics

- Reliable heating cycle
- Good heating efficiency
- Safety
- Flexible design
- Energy efficient

### Application

- Heating system
- Sensor housing
- De-icing
- ...

ALLRUNA VEL 07116717 ALLRUNA VEL 07116730 ALLRUNA VEL 07116731





www.allod.com



## Disclaimer

ALLOD provides written and illustrated advice in good faith. The information provided does not constitute advice and should not absolve customers from conducting additional independent testing to determine the suitability of the material for their intended applications.

Customers assume all risk and liability arising from their interpretation of the information and use or handling of any product. ALLOD makes no statements or guarantees whatsoever for the accuracy, suitability of particular applications, or the results either obtained or obtainable arising from the information contained in this document. All figures are indicative and can vary depending on the selected grade and production site.



### **ALLOD Werkstoff GmbH & Co. KG**

Steinacher Str. 3 D-91593 Burgbernheim, Germany  
E: [information@allod.com](mailto:information@allod.com)  
Phone: +49 (9843) 98089-0

---

### **ALLOD Asia Ltd.**

No. 11, Tung 6th St., Dajia Dist., Taichung City 437 Taiwan  
Tel: +886 4 26818001

---

### **ALLOD Chemical Technology Co.,Ltd.**

301, Building 1, 1515 Juxian Road, CN-315048 Ningbo, PR China  
Tel: +86-574-8836 3720  
MP: +86-13736035497